



# Clinical Case

## Dr. Marcel Ender

Important note:

In case you want to make a publication out of it, please follow the regular approval process. Dr Ender is asking for a previous approval from his side before an external publication of his pictures. Internal use (training etc is ok).



## Dr. Ender

- since 2009 Dentist in own Private Practice, Radolfzell, Germany
- 2005 - 2009 Teamleader Clinical Research & Education  
DENTSPLY Friadent, Germany
- 2003 - 2005 Employed Dentist
- 2003 Doctorate in Dentistry
- 2000 - 2002 Assistant Dentist
- 2000 German State Examination / Dental License

## Short description of the clinical case

- Male, 44 years old patient
- Distal approximal caries on tooth 24 (See Xrays initial situation)



- Dentsply products used:  
Palodent Plus, XPBOND, Ceram.X mono+ (M5)

## Initial situation with WedgeGuard



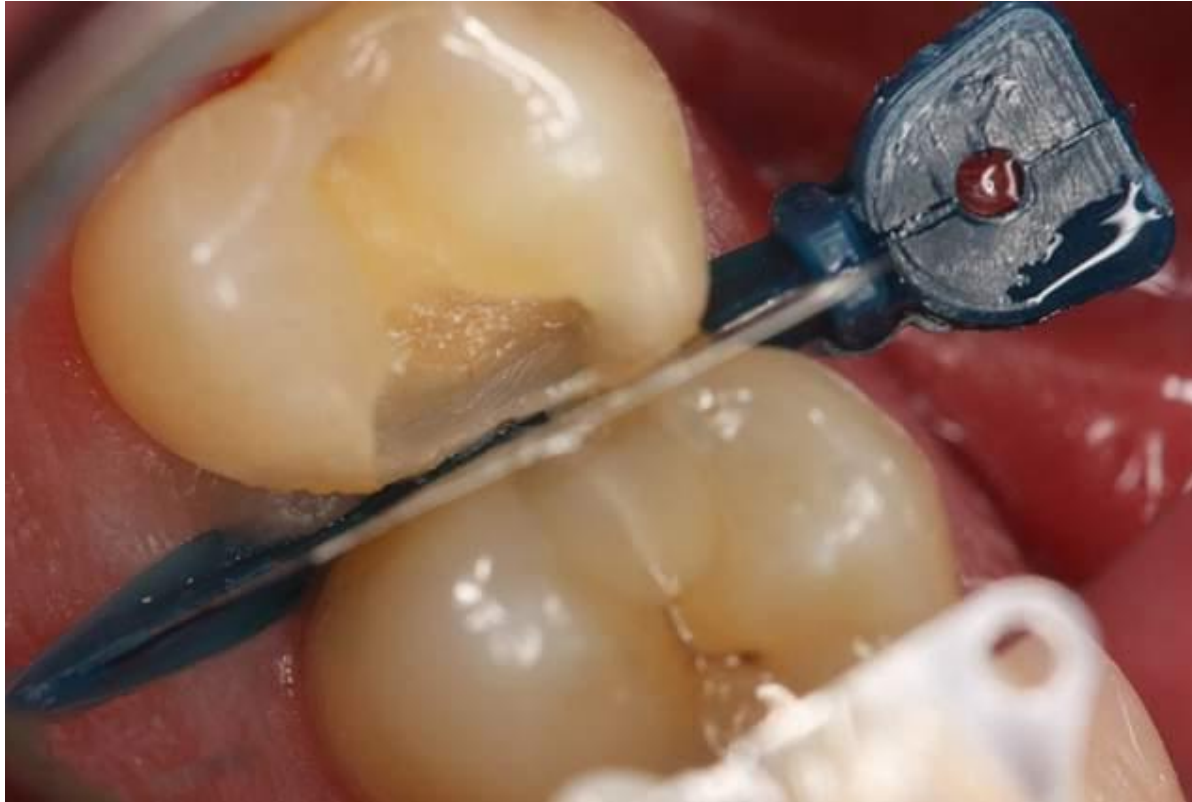
## Initial situation with WedgeGuard



## Initial preparation with Wedgeguard



## Preparation extension with WedgeGuard



## Matrix insertion after wedge



**Note:** Wedge is actually the WedgeGuard after shield removal

For better dentistry

**DENTSPLY**



## Final preparation with Palodent Plus Ring\*



\* Narrow ring size, for use on premolars

For better dentistry

**DENTSPLY**

## Final preparation with Palodent Plus Ring



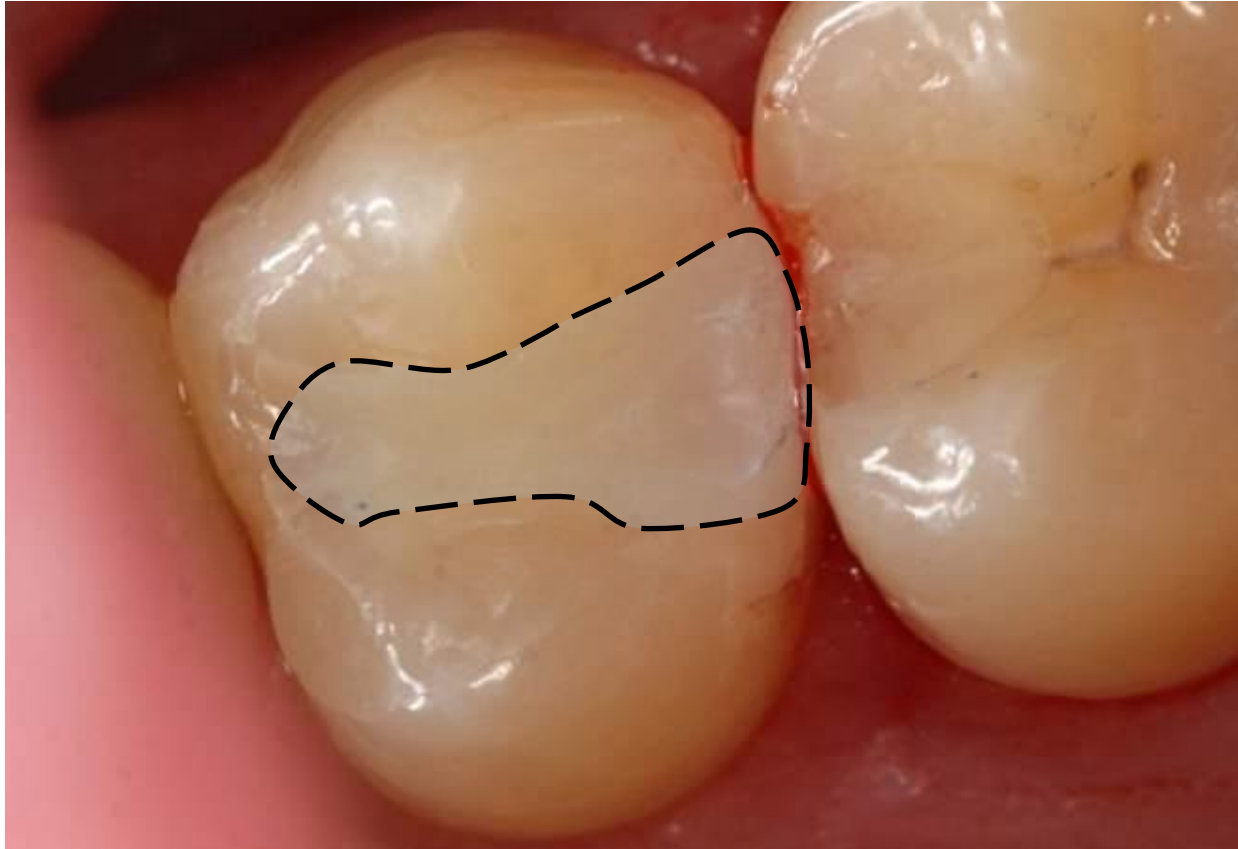
## Detailed view of enamel after acid etching



## Detailed view of cavity preparation



## Final Restoration



## Final Restoration





### Statement about his experience with Palodent Plus

"The Placement of dental wedges in the interproximal cervical area can be challenging in some clinical situations, especially in difficult-to-reach posterior areas. A parameter that can never be underestimated is the placement of the wedge with the tweezers. Especially in areas of difficult access, for instance in molar areas, where the circumstances can pose such a challenge as to inevitably completely hinder the workflow.

**The Palodent Plus system offers clear advantage for the placement of wedges and matrices because of the smart integration between the wedges and the tweezers.**

The wedges boast an locking perforation for secure and reliable handling which work seamless with the featuring locking pin in the tweezers. This feature makes placement and removal of the wedge a simple and easy business.

**I am also enthused with the Wedge-Guards: they offer a superb protection to the adjacent tooth during preparation. Afterwards, they can be further used as wedges. That is just as smart as it can get.**

**All things considered, Palodent Plus is a remarkable sectional matrix system! "**

Dr. Ender